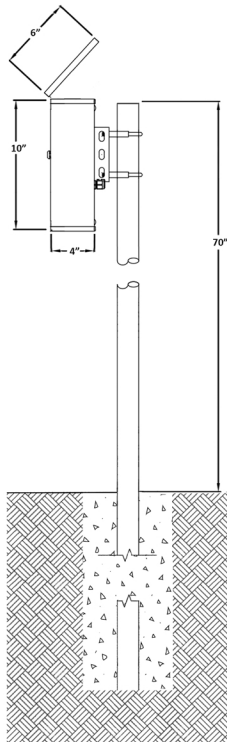
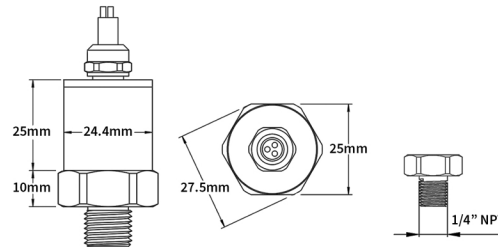
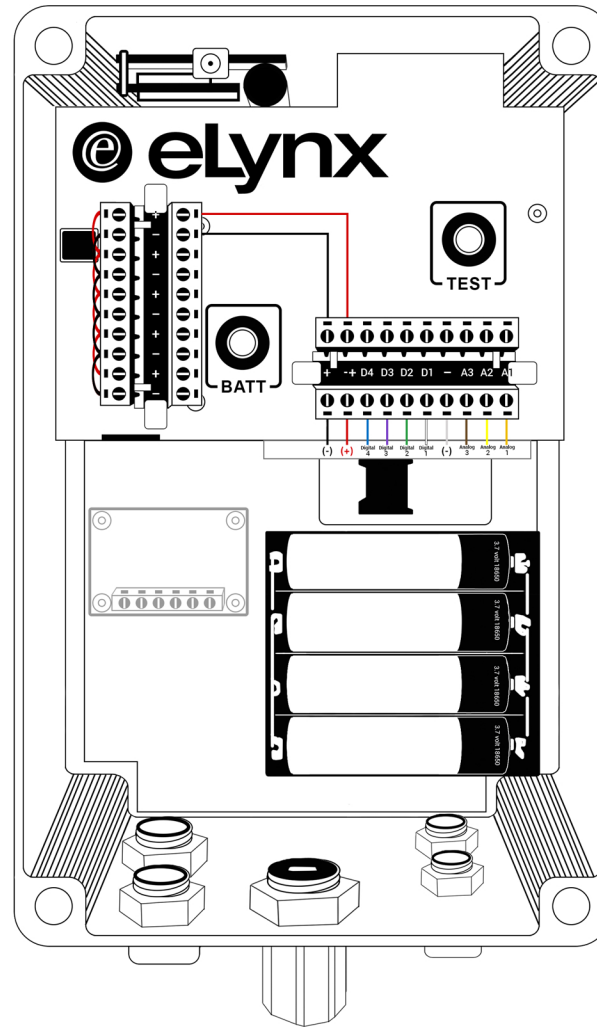


A FRONT VIEW - INSTALL



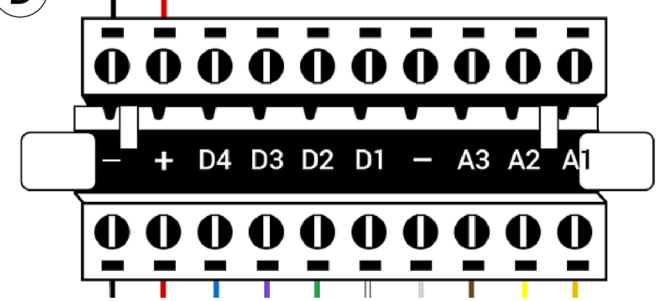
B SIDE VIEW - INSTALL

C DETAIL VIEW - ENCLOSURE



E DETAIL VIEW - PRESSURE TRANSMITTER

D DETAIL VIEW - WIRING



Signal Type	Example	Terminals
Analog Input (AI)	Pressure, tank level, temperature	A1-A3
Digital Input (DI)	Switch Status, pump ON/OFF	D1-D4
Alarm Cry-Out (DI)	Immediate alert/wake on state change	D1 or D2

INSTALLATION INSTRUCTIONS

1. Choose a location with full sun, south-facing if possible, and close to the field devices.
2. Mount the enclosure at eye level using clamps; slide the solar panel into the top bracket and leave cord grips accessible.
3. Install field devices per manufacturer instructions; protect or bury wiring with conduit if needed.
4. Identify signal type: AI (A1–A3), DI (D1–D4), or Alarm Cry-Out (D1/D2). Contact support if unsure.
5. Remove the enclosure cover, route wiring through a cord grip, and land signal wires on the horizontal rail.
6. Connect device + and – wires to the vertical power rail, starting at the bottom; double up if more than four devices.
7. Route the solar panel cable to the back right plug, tighten the seal, and press the BATT button.
8. Verify a blue LED above the batteries confirming power (may take up to 1 minute).
9. Wait a few minutes for data to transmit; use the eLynx app to view data, name device, set location, and create alarms.
10. Reinstall the enclosure cover, tighten the cord grip nut, and secure excess wiring or conduit to the pole.